



nana's green tea

For high resolution images, please download from:

<https://www.dropbox.com/scl/fo/fbmk4fvnikwj9n5vudk5t/h?rlkey=13k0h1eubzid91gddisy47xay&dl=0>

Press Release

Japan's Celebrated Matcha Café nana's green tea Lures Romance with Luscious Tea-Infused Chocolate Concoctions for Unforgettable Indulgence from 1 February to 15 March 2024

Affordable gratification awaits with delectable assortment of sweet treats to enjoy in this season of love



(22 January 2024, Hong Kong) **nana's green tea**, the renowned green tea and matcha café hailing from Japan, is delighted to announce the launch of cherished chocolate-themed confections created exclusively for the season of love. From 1 February to 15 March 2024, sweet lovers are invited to embark on exquisite journeys through Chinese New Year, Valentine's Day and White Day starring two luscious concoctions and adorable boxes of exquisite soft-centred chocolates.

An ultimate indulgence for the senses, *Chocolate Raspberry Parfait* (HK\$108) is the harmonious combination of rich chocolate and tangy raspberry sorbet. The sorbet brings a burst of refreshing flavour while complementing the aromatic allure of the chocolate, resulting in a perfectly balanced symphony of tastes.

The luscious middle layer of the parfait literally melts in the mouth, with scoops of sorbet paired with silky-smooth vanilla soft serve. A sprinkling of crunchy cereal contributes to a medley of distinct textures. Dressing the bottom of the glass is a glorious combination of chocolate mousse, raspberry jam and raspberry sauce, while a layer of homemade delights – chocolate sponge cake and dark chocolate crunch – rests on top. Beautifully adorned with a homemade heart-shaped crispy biscuit, fresh cream and a drizzle of piquant raspberry sauce, this decadent dessert is a visual spectacle that wows the taste buds with intense flavours.

Hojicha Chocolate Latte (HK\$48) is a must-try beverage for choco or tea connoisseurs in this season of love. The special latte features premium hojicha powder from Kyoto, combined with a choice of milk or soy milk and lashings of white chocolate sauce. With a creamy layer on top dusted with chocolate powder and decorated with a homemade heart-shaped biscuit, this velvety smooth drink is both a fragrant delight and a rich, multi-flavoured experience.

Whether enjoyed hot or cold, *Hojicha Chocolate Latte* perfectly blends the earthy notes of hojicha with the creaminess of milk and the sweetness of white chocolate, creating an indulgent treat that will captivate the senses and make Valentine's Day truly special.

In a Valentine's exclusive, **nana's green tea** presents sumptuous handmade *nana's Chocolates* in a charming box of four from 1-14 February 2024 to surprise sweethearts. Each gift box (priced at HK\$68) encases the smooth, creamy mouthfeel of Japan's famed nama chocolate in a choice of three enchanting flavours – the new concoction of *Roasted Soybean* or the all-time favourites of *Hojicha* or *Matcha*. They conjure the sensory pleasures of savouring aromatic roasted soya or sipping fragrant premium teas while biting into pure, fresh, gooey chocolate. The chocolates are also available as year-round treats in sleek boxes of 16 (HK\$168).

Brought to Hong Kong by Cafe Deco Group, **nana's green tea** offers a blissful modern Japanese tea-house setting, with curated arrays of teas and tea-infused cakes, ice cream and parfaits, and savouries and salads designed to bring a smile to the face.

Each outlet is artfully designed to be unique to its location while maintaining a sense of collective unity. The AIRSIDE location spans more than 1,600 sq. ft, offering 60 seats framed by a contemporary pergola with a dappled ceiling effect. The serene yet playful interiors showcase the brand's take on joyous, thoughtful hospitality, and defy the conventions of a typical café chain.

nana's green tea is located at Shop B128, AIRSIDE, 2 Concorde Road, Kai Tak, Kowloon, Hong Kong. It is a short walk from Kai Tak MTR Station (Exit C) and opens daily from 12:00 noon to 9:30 p.m.

For more information, please visit www.cafedecogroup.com/en-us/brand/nana's%20green%20tea/, email nanagtas@cafedecogroup.com, call (852) 2117-1309, or Whatsapp (852) 6507-9723.

Like and connect with **nana's green tea Hong Kong** on:
Facebook – www.facebook.com/nanasgreenteahongkong/
Instagram – www.instagram.com/nanasgreenteahongkong/

- End -

About nana's green tea

nana's green tea is a popular Japanese matcha concept café with an international presence. It debuted in 2001 in Tokyo with a mission to spread casual contemporary Japanese café culture across the country and the world with signature green tea and matcha-infused beverages and desserts alongside udon, donburi, rice dishes and salads. It now stands as the largest and most celebrated matcha café chain in Japan with 73 outlets.

Joining international branches in Singapore, Taiwan, the United States, Canada and Australia, **nana's green tea's** first Hong Kong café opened in September 2023 at AIRSIDE shopping mall in Kai Tak, East Kowloon. A second café is scheduled to open later this year at The Southside in Wong Chuk Hang.

About Cafe Deco Group

Cafe Deco Group is one of the leading and most successful hospitality groups in Hong Kong. Its success lies in its full dining experience for all, including consistently high-quality food, a wide variety of cuisines, friendly and efficient service, as well as the appealing ambience of its outlets for any occasion, business or pleasure. The Group now manages a diversified portfolio of more than 30 restaurants and bars in Hong Kong and Sydney.

Distributed on behalf of **nana's green tea Hong Kong** by JIN Communications.

For more information or request interviews, please contact:

Yvonne Tang
Group MarCom Manager
T: +852 2290 6652
E: [yvonne tang@cafedecogroup.com](mailto:yvonnetang@cafedecogroup.com)

Regina Wong
Assistant Group MarCom Manager
T: +852 2290 6625
E: [regina wong@cafedecogroup.com](mailto:reginawong@cafedecogroup.com)



Chocolate Raspberry Parfait harmoniously blends rich chocolate and tangy raspberry sorbet



Hojicha Chocolate Latte is a must-try beverage for choco or tea connoisseurs in this season of love



The smooth, creamy mouthfeel of Japan's famed nama chocolate enriches a special Valentine's Day box of nana's Chocolates, available in three enchanting flavours – Hojicha, Matcha and the new arrival of Roasted Soybean



Each nana's green tea outlet is carefully designed to be unique to its location while maintaining a sense of collective unity. Harmonious settings reinforce culture and tradition amid the serene aesthetics of a modern Japanese tea ceremony



nana's green tea

高解像度照片請到以下 Dropbox 連結下載：

<https://www.dropbox.com/scl/fo/fbmk4fvnikwj9n5vudk5t/h?rlkey=13k0h1eubzid91gddisy47xay&dl=0>

新聞稿

日本人氣茶室 nana's green tea

將於 2024 年 2 月 1 日至 3 月 15 日期間

以戀愛季節限定朱古力主題美點 與全城沉醉於濃情蜜意氛圍

全新芭菲、茶飲及情人節專屬的手工朱古力禮盒為城中戀人雙雙締造浪漫回憶



(2024 年 1 月 22 日，香港) 今個戀愛季節，日本人氣茶室 **nana's green tea** 匠心以象徵愛情的朱古力為焦點，結合品牌引以為傲的茶藝特色，呈獻全新芭菲及茶飲，與全城沉醉於濃情蜜意氛圍；另推出情人節專屬的手工朱古力禮盒，為城中戀人雙雙締造浪漫回憶。

兩款為甜蜜節日而設計的限定美點將於 2024 年 2 月 1 日至 3 月 15 日期間供應，並以自家製的愛心曲奇作點綴，成就一場滿足視覺及味覺的心思體驗。當中，「朱古力紅桑莓芭菲」（港幣 108 元）絕對是大家與另一半分享愛意的最佳選擇。此芭菲採用不同的朱古力及紅桑莓美點打造口感豐富的動人滋味，並以自家製的黑朱古力脆米、鬆軟的朱古力海

綿蛋糕及綿密的朱古力慕絲作基底，再綴以帶酸香的紅桑莓醬、雲呢拿軟雪糕及玄米脆片，面層搭配雲呢拿雪糕及紅桑莓雪葩，並澆上紅桑莓醬，倍添視覺層次。

而「焙茶可可朱古力」（港幣 48 元；熱 / 凍）亦是愛侶們的暖心之選；精選來自日本京都的優質焙茶搭配香滑日本牛奶（或可選豆奶），並加入濃郁的白朱古力醬，面層的鮮忌廉同時灑上朱古力粉，令茶飲的甘甜個性更為突出。

與此同時，**nana's green tea** 亦首度推出節日送禮必備的朱古力禮盒；口感柔軟順滑的「nana's 生朱古力禮盒」定價為港幣 168 元（一盒 16 粒），並設有三種各具風味的選擇，包括「焙茶生朱古力」、「抹茶生朱古力」及嶄新面世的「黃豆粉生朱古力」。此外，為迎接情人節的到來，品牌更將於 2024 年 2 月 1 日至 14 日期間限定推出「nana's 情人節朱古力禮盒」，定價為港幣 68 元（一盒 4 粒）；其簡潔精美的和式包裝必定教收禮者眼前為之一亮。

nana's green tea 香港店由本地多元化餐飲集團 Cafe Deco Group 引入市場，致力堅守品牌的款待宗旨，為城中美食愛好者帶來一系列堅持以優質食材製作的茶飲、甜點及和風料理。

每家 **nana's green tea** 分店均經過精心設計，既突顯每家分店的個性，又保持品牌的統一性。而品牌首家香港店位於九龍地標 AIRSIDE，佔地超過 1,600 平方呎，設有 60 個座位。室內設計以現代茶室美學為基礎，結合傳統日式民家木系建築特色，以灰色為主色調搭配開放式的橫樑，營造簡潔明亮的氛圍，洋溢日系茶室的侘靜美感。

nana's green tea 香港店位於香港九龍啟德協調道 2 號 AIRSIDE B128 號舖（港鐵啟德站 C 出口），營業時間為中午 12 時至晚上 9 時 30 分。

如欲查詢更多資訊，歡迎瀏覽 www.cafedecogroup.com/zh-hk/brand/nana's%20green%20tea/、電郵至 nanagtas@cafedecogroup.com、致電（852）2117-1309、或發送 Whatsapp 短訊至（852）6507-9723。

關注 **nana's green tea** 香港店社交媒體：

Facebook —— www.facebook.com/nanasgreenteahongkong/

Instagram —— www.instagram.com/nanasgreenteahongkong/

nana's green tea 簡介

nana's green tea 於 2001 年以 Green Tea Cafe 首度於日本東京面世，及後於 2006 年以創辦人女兒的名字 Nana，重新命名品牌為 **nana's green tea**，並採用七枝茶筴——日文中的 nana (なな) 有數字七的意思——作為品牌標誌；甫登場已火速成為當地首屈一指的連鎖餐飲名店，至今於全日本共有 73 家分店，其店舖版圖更延伸至新加坡、台灣、美國、加拿大及澳洲。最新香港分店於 2023 年 9 月開幕，座落香港九龍啟德發展區全新綜合地標 AIRSIDE；第二分店更將於 2024 年進駐黃竹坑 The Southside。

品牌自成立以來，一直堅持以優質食材製作的茶飲、甜點及和風料理，為大家帶來歡樂及幸福感；以細節出發，細意展現融會和式茶道文化的精緻用餐體驗。

Cafe Deco Group 簡介

香港多元化餐飲集團 Cafe Deco Group 屹立香港多年，成功背後有賴其全面的餐飲體驗，包括優質食品、多樣化的菜式、友善且富效率的服務、餐廳內愉快且適合各種商務或休閒活動的氛圍。現時，Cafe Deco Group 在香港及澳洲悉尼管理超過 30 間餐廳及酒吧。

以上由 JIN Communications 代表 **nana's green tea 香港店** 發佈。

傳媒查詢，請聯絡：

Yvonne Tang
Group MarCom Manager

電話: +852 2290 6652

電郵: yvonnetang@cafedecogroup.com

Regina Wong
Assistant Group MarCom Manager

電話: +852 2290 6625

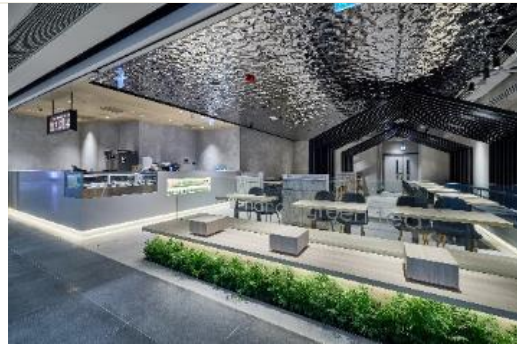
電郵: reginawong@cafedecogroup.com



兩款為甜蜜節日而設計的限定美點將於 2024 年 2 月 1 日至 3 月 15 日期間供應，並以自家製的愛心曲奇作點綴，成就一場滿足視覺及味覺的心思體驗。當中，「朱古力紅桑莓芭菲」（左）絕對是大家與另一半分享愛意的最佳選擇；而「焙茶可可朱古力」（右）亦是愛侶們的暖心之選



nana's green tea 亦首度推出節日送禮必備的朱古力禮盒，並設有三種各具風味的選擇，包括「焙茶生朱古力」、「抹茶生朱古力」及「黃豆粉生朱古力」



每家 nana's green tea 分店均經過精心設計，既突顯每家分店的個性，又保持品牌的統一性。而品牌首家香港店位於九龍地標 AIRSIDE，室內設計以現代茶室美學為基礎，洋溢日系茶室的侘靜美感